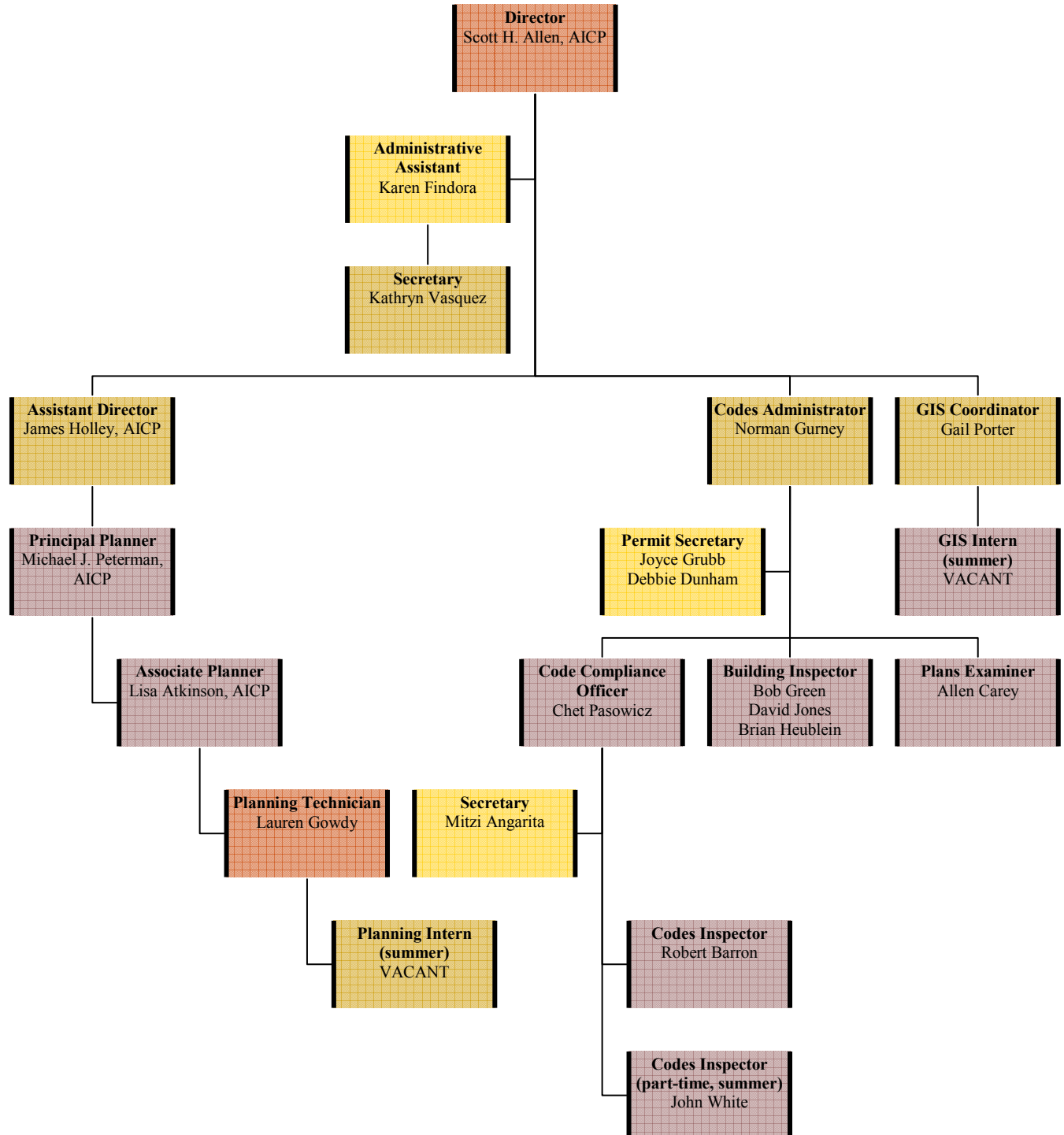


Community Development Department

Planning Division / Codes Division / GIS Division

November 2009



- **Assistant Director, Administrative Assistant, and Codes Administrator** report directly to **Director**
- **Principal Planner and GIS Coordinator** report directly to **Assistant Director**
- **Associate Planner and Planning Technician** report to **Principal Planner and Assistant Director**, with **daily workload/tasks assigned by Principal Planner** and **all other supervision** (annual review, discipline, personnel form sign-offs, etc.) handled by **Assistant Director**
- *“Managers” include: Director; Assistant Director; Codes Administrator; Principal Planner; Code Compliance Officer; and Administrative Assistant*